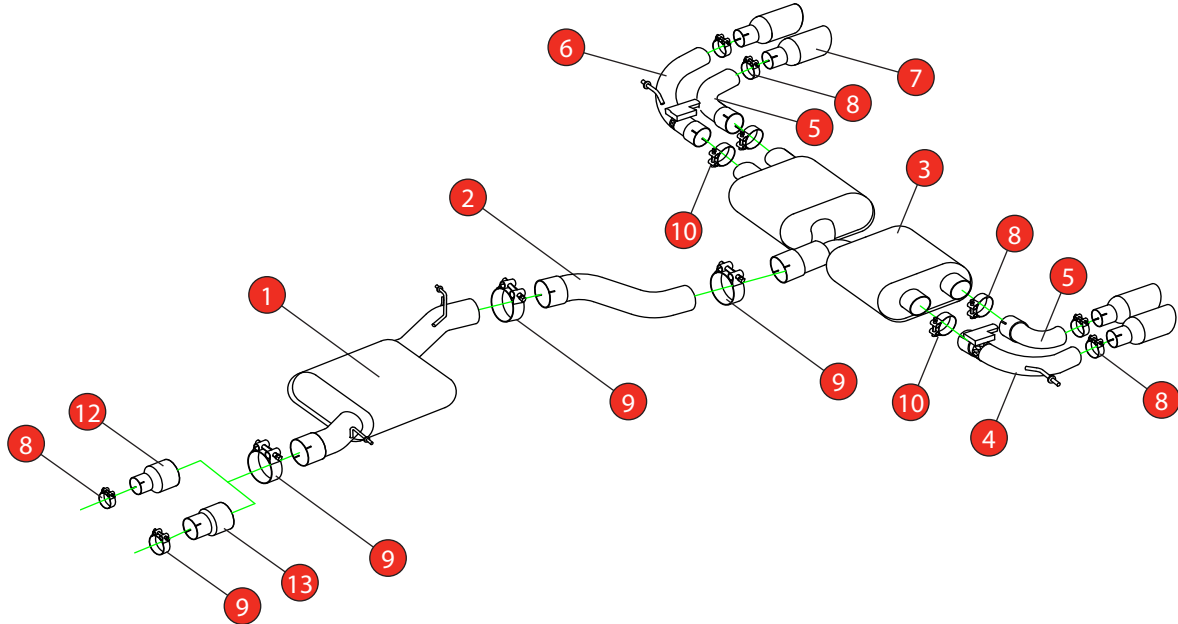


Car	Volkswagen Golf R MK7	Part No.	SVW046D
Year	2014-2016	Fit Kits	305FK
Notes	Where not supplied use original fittings	Features	Pipe Diameter:- 80mm

Estimated Fitting Time: 2 Hours



NO.	PART NO.	DESCRIPTION	QTY
1	763VW	Resonated Centre Section	1
2	765VW	Link Pipe	1
3	766VW	Rear Silencer	1
4	814VW	L/H Valved Outer Trim Connecting Pipe	1
5	816VW	L/H & R/H Inner Trim Connecting Pipe	2
6	815VW	R/H Valved Outer Trim Connecting Pipe	1
7	Z023.10061	Polished Daytona Trim	4
Fit Kit			
8	Z016.10064	63-68mm Clamp	7
9	Z016.10069	79-85mm Clamp	3
10	Z016.10070	66mm H/D Clamp	2
11	Z016.10056	73-79mm Clamp	1
12	AD103	Adaptor (USE TO FIT TO O.E DOWNPIPE)	1
13	AD107	Adaptor (USE TO FIT TO Ø76mm DOWNPIPE)	1

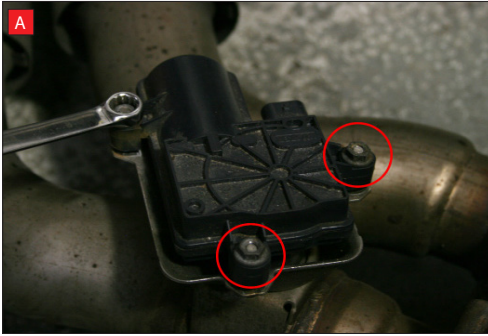
DATE	12/07/2022
ISSUE	07
AUTHORISED	S Shipley

NOTE: ENSURE SCORPION SYSTEM IS CLEAR OF MOVING PARTS AND ALL ORIGINAL FUNCTIONS WORK CORRECTLY.



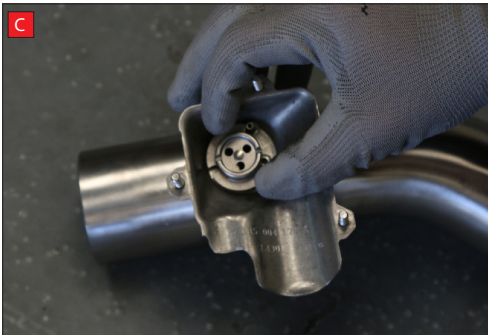
STAY CONNECTED TO RED POWER.

Car	Volkswagen Golf R MK7	Part No.	SVW046D
Year	2014-2016	Fit Kits	305FK
Notes	Where not supplied use original fittings	Features	Pipe Diameter:- 80mm



A) After you have removed O.E exhaust you will need to swap the valve motors to the Scorpion exhaust. Remove the 3 nuts (keep safe as you will need them to bolt the electronic valve motor to Scorpion Exhaust).

B) Lift up the motor. You will now be able to see the torsion spring (This must stay on the electronic valve motor to work with Scorpion Exhaust).



C) Rotate Scorpion valve so it aligns with the torsion spring.

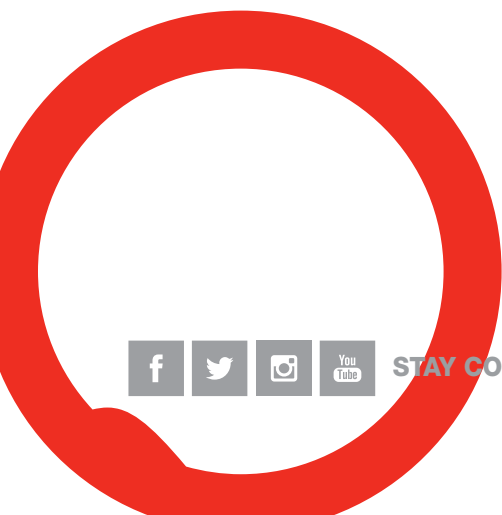
D) Now fit the O.E electronic valve motor ensuring the spring seats correctly to the lugs of the valve.

E) Using the 3 O.E nuts secure in place.



F) Both of the rear mounting points need rotating 180° when fitting the Scorpion exhaust.

Once happy with fitment of Scorpion Exhaust, fully tighten up all clamps and fixing and plug in the electronic valve motors.



STAY CONNECTED TO RED POWER.